

Sunflower

Post Malone

Trans. Matt Gibson

Intro

R L R L R

The Intro section consists of two staves. The top staff is a guitar part in 4/4 time, starting with a treble clef and a key signature of one flat. It features a rhythmic pattern of eighth notes with 'x' marks above them, indicating fretted notes. Above the first five notes, the letters 'R L R L R' are written. The bottom staff is a bass line with a bass clef, featuring a simple harmonic accompaniment of quarter notes and eighth notes.

Verse 1

Verse 1 consists of two staves. The top staff is a guitar part with a treble clef and a key signature of one flat. It features a rhythmic pattern of eighth notes with 'x' marks above them. The bottom staff is a bass line with a bass clef, featuring a simple harmonic accompaniment of quarter notes and eighth notes. The lyrics "Needless to say..." are written below the first staff.

"Needless to say..."

Bridge

The Bridge section consists of two staves. The top staff is a guitar part with a treble clef and a key signature of one flat. It features a rhythmic pattern of eighth notes with 'x' marks above them. The bottom staff is a bass line with a bass clef, featuring a simple harmonic accompaniment of quarter notes and eighth notes. The lyrics "Thinkin' in a bad way..." are written below the first staff. The section ends with a double bar line and a repeat sign, followed by a small 'x4' indicating four repetitions.

"Thinkin' in a bad way..." x4

Pre Chorus

The Pre Chorus section consists of two staves. The top staff is a guitar part with a treble clef and a key signature of one flat. It features a rhythmic pattern of eighth notes with 'x' marks above them. The bottom staff is a bass line with a bass clef, featuring a simple harmonic accompaniment of quarter notes and eighth notes. The lyrics "OOooo..." are written below the first staff.

"OOooo..."

Chorus

The Chorus section consists of two staves. The top staff is a guitar part with a treble clef and a key signature of one flat. It features a rhythmic pattern of eighth notes with 'x' marks above them. The bottom staff is a bass line with a bass clef, featuring a simple harmonic accompaniment of quarter notes and eighth notes. The lyrics "Then you're left in the dust..." are written below the first staff.

"Then you're left in the dust..."

Verse 2

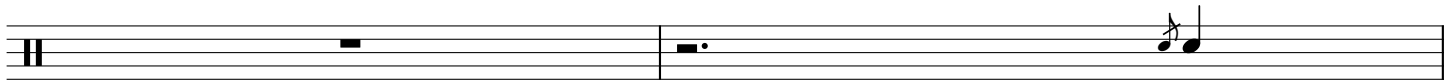
Verse 2 consists of two staves. The top staff is a guitar part with a treble clef and a key signature of one flat. It features a rhythmic pattern of eighth notes with 'x' marks above them. The bottom staff is a bass line with a bass clef, featuring a simple harmonic accompaniment of quarter notes and eighth notes. The lyrics "Everytime I'm leaving..." are written below the first staff. The section ends with a double bar line and a repeat sign, followed by a small 'x6' indicating six repetitions.

"Everytime I'm leaving..." x6

Bridge

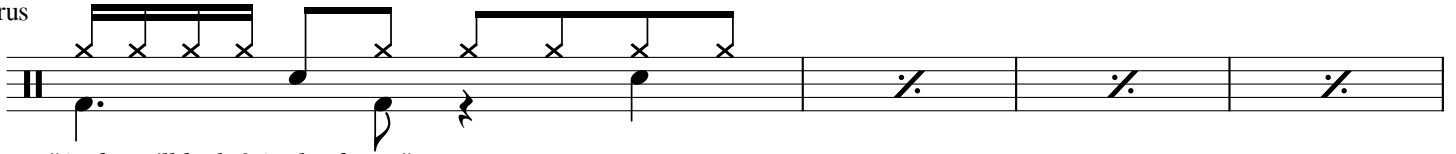
The Bridge section consists of two staves. The top staff is a guitar part with a treble clef and a key signature of one flat. It features a rhythmic pattern of eighth notes with 'x' marks above them. The bottom staff is a bass line with a bass clef, featuring a simple harmonic accompaniment of quarter notes and eighth notes. The lyrics "I know you're scared..." are written below the first staff.

"I know you're scared..."



"I know I always..."

Chorus



"And you'll be left in the dust..."

